

T 55 R 13E M Will

	2	3	4	5	6	7	8	9	10	11	12	13	14	15	16	17	18	19	20	21	22	23	24	25
51 A																								
52 B	+	+	+		+	+	+		+	+	+		+	+	+		+	+	+		+	+	+	
53 C	+	6	+		+	5	+		+	4	+		+	3	+		+	2	+		+	1	+	
54 D	+	+	+		+	+	+		+	+	+		+	+	+		+	+	+		+	+	+	
55 E																								
56 F	+	+	+		+	+	+		+	+	+		+	+	+		+	+	+		+	+	+	
57 G	+	7	+		+	8	+		+	9	+		+	10	+		+	11	+		+	12	+	
58 H	+	+	+		+	+	+		+	+	+		+	+	+		+	+	+		+	+	+	
59 J																								
60 K	+	+	+		+	+	+		+	+	+		+	+	+		+	+	+		+	+	+	
61 L	+	18	+		+	17	+		+	16	+		+	15	+		+	14	+		+	13	+	
62 M	+	+	+		+	+	+		+	+	+		+	+	+		+	+	+		+	+	+	
63 N																								
64 O	+	+	+		+	+	+		+	+	+		+	•	•	•		+	+	+		+	+	+
65 P	+	19	+		+	20	+		+	21	+		+	22	+		+	23	+		+	24	+	
66 Q	+	+	+		+	+	+		+	+	+		+	+	+		+	+	+		+	+	+	
67 R																								
68 S	+	+	+		+	+	+		+	+	+		+	+	+		+	+	+		+	+	+	
69 T	+	30	+		+	29	+		+	28	+		+	27	+		+	26	+		+	25	+	
70 U	+	+	+		+	+	+		+	+	+		+	+	+		+	+	+		+	+	+	
71 V																								
72 W	+	+	+		+	+	+		+	+	+		+	+	+		+	+	+		+	+	+	
73 X	+	31	+		+	32	+		+	33	+		+	34	+		+	35	+		+	36	+	
74 Y	+	+	+		+	+	+		+	+	+		+	+	+		+	+	+		+	+	+	
75 Z																								

LEGEND

○ = Corner having information on form 5680-2 in this file.

FILING INSTRUCTION

File 5680-2 card record by letter and number coordinates behind the file guide for the township in which it falls.

File the 5680-2 card record by letter and then by number i.e., all A cards first, then B cards etc.

The first card behind the file guide (if data have been obtained and recorded) will be card A-1 for N.W. Township Corner, then card A-2 for 1/16 corner then card A-3 for 1/4 corner etc.

Index File No. N-15

T 15.5 R. 13 E

Merid. WMP

CORNER RECORD (SEARCH)
(Ref. FSM 7151.4)

Tract or Survey No. R.A.C. Cor. No. N-15

R.D. _____ County DESCHUTES

N.F. DESCHUTES State OREGON

CORNER DIAGRAM

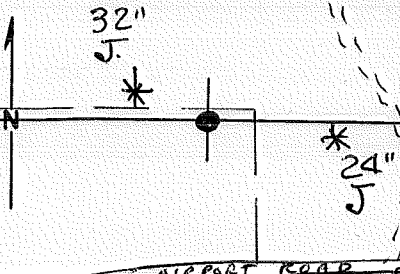


PHOTO IDENTIFICATION DATA

Photo No. _____
 Filed At. _____
 Object Ident. _____
 Ident. By _____
 Signature _____ 7

PLANE COORDINATE POSITION DATA

State _____ Zone _____
 X _____
 Y _____
 Estab. By _____
 Agency _____ 8

Signature _____

DESCRIBE CORNER MONUMENT FOUND

2 1/2" BRASS CAP ON 1 1/2" STEEL PIPE RISING 8" ABOUT 0 6 FT. SOUTH OF FENCE AND 50 FT. WEST OF FENCE CORNER.

DESCRIBE BEARING TREES OR OTHER OFFICIAL ACCESSORIES FOUND

A 32" JUNIPER BEARS N 81° W 3894 FT.
 A 24" JUNIPER BEARS S 89 1/2° E 9174 FT.

BOTH BLAZED & SCRIBED

DESCRIBE CORNER LOCATION RELATIVE TO NEAR-BY FEATURES, ALSO HOW TO REACH CORNER

NORTH of MAINTENANCE SHOP ABOUT 150 FT NORTH of AIRPORT ROAD.

Title PLS Division _____ Headquarters SO-ENG Date 25 MAY 78 7100-52-(3/68) 5

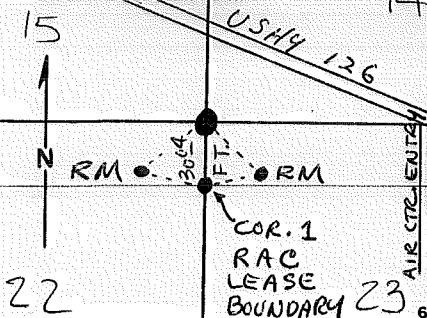
Index File No. N-17
 T 15 S R. 13 E
 Merid. W MT

CORNER RECORD (SEARCH)
 (Ref. FSM 7151.4)

Tract or Survey No. R.A.C. Cor. No. N-17

R.D. _____ County DESCHUTES
 N.F. DESCHUTES State OREGON

CORNER DIAGRAM



DESCRIBE CORNER MONUMENT FOUND

1 SPIKE POINTED UPWARDS IN CONCRETE PIER

DESCRIBE BEARING TREES OR OTHER OFFICIAL ACCESSORIES FOUND

2 BLM REFERENCE MONUMENTS

A 2 1/2" BRASS CAP ON 1 1/2" STEEL PIPE RISING 14" IN MOUND OF STONES BEARS S 43 1/2° W 30' FT.

A 2 1/2" BRASS CAP ON 1 1/2" STEEL PIPE RISING 3" IN A MOUND OF STONES BEARS S 45 1/2° E 35 FT.

DESCRIBE CORNER LOCATION RELATIVE TO NEAR-BY FEATURES, ALSO HOW TO REACH CORNER

3 ABOUT 100 FT. SOUTH OF US HIGHWAY 126 AND 300 FT WEST OF AIR CENTER ENTRY

PHOTO IDENTIFICATION DATA

Photo No. _____
 Filed At. _____
 Object Ident. _____
 Ident. By _____
 Signature _____

PLANE COORDINATE POSITION DATA

State _____ Zone _____
 X _____
 Y _____
 Estab. By _____
 Agency _____

Signature

Title

Division

Headquarters

Date

7100-52-(3/68)

PLS

SU-ENG

25 MAY 78

Index File No. N-19

CORNER RECORD (SEARCH)
(Ref. FSM 7151.4)

Tract or Survey No. RAC

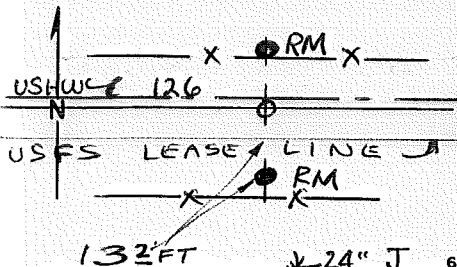
Cor. No. N-19

T 15 S R. 13 E
Merid. W^{Mr}

R.D. _____ County DESCHUTES
N.F. DESCHUTES State OREGON

CORNER DIAGRAM

18" J*



DESCRIBE CORNER MONUMENT FOUND

(IN PVMT)
515 FT. SOUTH of HWY. ⊥

DESCRIBE BEARING TREES OR OTHER OFFICIAL ACCESSORIES FOUND

BLM REFERENCE MONUMENTS
A 2½" BRASS CAP ON 1½" STEEL PIPE RISING 16" IN A MOUND OF STONES BEARS "N" 38° E FT.
A 2½" BRASS CAP ON 1½" STEEL PIPE RISING 6" IN A MOUND OF STONES BEARS "S" 38° E FT.

PHOTO IDENTIFICATION DATA

Photo No. _____
File d At. _____
Object Ident. _____
Ident. By _____
Signature _____

DESCRIBE CORNER LOCATION RELATIVE TO NEAR-BY FEATURES, ALSO HOW TO REACH CORNER

ALONG US HIGHWAY 126 ABOUT 0.4 MILE EAST OF AIR CENTER ENTRY

PLANE COORDINATE POSITION DATA

State _____ Zone _____
X _____
Y _____
Estab. By _____

AN 18" JUNIPER BEARS N 38° W 120° FT.
A 24" JUNIPER BEARS S 12½° E 155° FT.

BOTH BLAZED & SCRIBED.

Agency _____
Signature _____

Title _____ Division _____ Headquarters _____

Date _____ 7100-52-(3/68)

PLS

SO-ENG

25 MAY 78